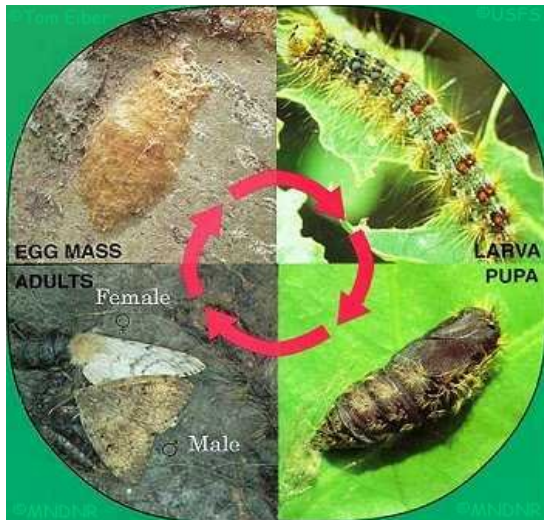


Mecosta County Introduction to Gypsy Moth Suppression

What is a Gypsy Moth?



<http://eekwi.org/critter/insect/mothface.htm>

- Invasive species introduced in Boston area in 1868, intended for silk production.
- Much of Michigan has been generally infested since 1984.

What is a Gypsy Moth Suppression Program?

- Conduct egg mass surveys beginning early fall (October-November is often the ideal time in West Michigan)



- Establish and digitize spray blocks based on egg mass survey.
- Provide maps and consultation on timing of gypsy moth suppression actions.
- Monitor egg masses for hatch in spring, coordinate spray of B.t.k. in May-June
- Perform a post-spray evaluation to determine effectiveness of spray.
- Maintain records of population dynamics and homeowner interactions

Why are Gypsy Moths a Concern?

- Invasive species such as gypsy moths generally follow a 6-year invasion curve
- Gypsy moths have no natural predators in the United States.
- A single egg mass can contain 500-1,000 eggs, depending on several factors.



- Extremely high numbers of caterpillars can cause significant defoliation to trees. Repeated defoliation can even cause tree mortality in overly stressed trees.



Mecosta County Introduction to Gypsy Moth Suppression

- Loss of trees can be costly, both in tree removal and loss of property value, but also the esthetic value of the tree.



- Introduction of *E. maimaiga* and NPV helped to mitigate very high densities, but even at lower numbers gypsy moth can still cause substantial nuisance.



- Reactionary Programs often require several years of spray and monitoring to regain control of the population



More Information?

- Aquatic Consulting Services website
www.aquaticremedies.com/gypsymoth
- Michigan DNR
http://www.michigan.gov/invasives/0,5664,7-324-68002_71241-379403-.00.html
- US Forest Service
<https://www.fs.fed.us/research/invasive-species/insects/gypsy-moth.php>



Neal Swanson, Owner/Biologist
Aquatic Consulting Services
Cell: (616) 706-2164
Ph: (989) 689-0223
gypsymoth@aquaticremedies.com